



# Measuring sustainability in Public Health, Clinical, and Community settings: A systematic review of available measures

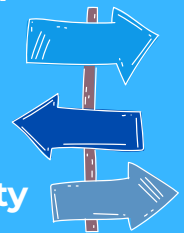


PLAIN LANGUAGE SUMMARY - JANUARY 2023

## KEY MESSAGES

- Measuring sustainability of evidence-based interventions is a complex task.
- The 'Provider Report of Sustainment Scale' had the highest score for psychometric and pragmatic qualities.
- Future research is needed to improve the quality of current sustainability measures.

The results can guide the selection of the most robust and relevant measures of sustainability and sustainability determinants.



## What is this review about?

This review looked at how measures of sustainability and sustainability determinants are used in research conducted in community, public health, and clinical settings. We also looked at the quality of the measures and factors that could affect their usefulness and application in real-world situations.

We included studies that reported on the development, psychometric evaluation, or research-based use of any multi-item, quantitative measure of sustainability or factors that impact sustainability.



**Psychometric evaluation** is the process of testing and evaluating the reliability and validity of a measurement tool to ensure that it accurately measures what it is intended to measure, and produces consistent results every time it is used.

## Why is this review important?

Measuring sustainability is complex. To ensure that we collect accurate data on sustainability and the factors that impact sustainability, it is essential that the measures we use are:

- reliable,
- have evidence of validity,
- easy to access, use and score; and
- appropriate to the specific setting and population we are working with.

## What did we do?

1

We systematically searched seven electronic databases, reference lists of relevant reviews, online repositories of implementation measures, and the grey literature.

2

Eligibility screening and data extraction were conducted independently by two members of the research team. Eligibility was not restricted by language or date.

3

The pragmatic and psychometric properties of included measures were assessed using the Psychometric and Pragmatic Evidence Rating Scale (PAPERS). How each measure has been used in research was descriptively analysed.

## What is included in this review?

**223** publications



**28** individual measures

**2** measured sustainability as an outcome

**25** measured sustainability determinants

**1** measured both

Measures were used in a variety of settings including healthcare, education and community settings.



## What were the main findings?

- The Provider Report of Sustainment Scale had the highest PAPERS score and measured sustainability as an outcome.
- The School-wide Universal Behaviour Sustainability Index-School Teams had the highest PAPERS score of the measures of sustainability determinants.
- The psychometric and pragmatic quality of the measures was variable, with PAPERS scores ranging from 14 to 35 out of a possible 56 points.
- The review also found that the use of the measures in research was limited.

## Limitations of the study

The review had some limitations, including the exclusion of non-quantitative measures.

## About Us

This research was conducted by researchers at the University of Newcastle, Hunter New England Population Health and the National Centre of Implementation Science (NCOIS). NCOIS is an NHMRC funded Centre for Research Excellence associated with the University of Newcastle.

**Key contact & research lead:** Dr Alix Hall (Ivers) - [Alix.Ivers@health.nsw.gov.au](mailto:Alix.Ivers@health.nsw.gov.au)

## Full article

Hall A, Shoesmith A, Doherty E, McEvoy B, Mettert K, Lewis CC, Wolfenden L, Yoong SL, Kingsland M, Shelton RC, Wiltsey Stirman S, Imad N, Sutherland R, Nathan N.

[Evaluation of measures of sustainability and sustainability determinants for use in community, public health, and clinical settings: a systematic review.](#)

*Implementation Science* 17, 81 (2022). <https://doi.org/10.1186/s13012-022-01252-1>